

Import Parameters for Deviated Wells
Sample Along Wellbore
Interval 200
Production Curve Average
Start At <Zone Top>

GVERSE
GeoGraphix
Potential to Production



GEOATLAS

Integrated Geological
Mapping

A COMPLETE GEOSCIENCE PLATFORM



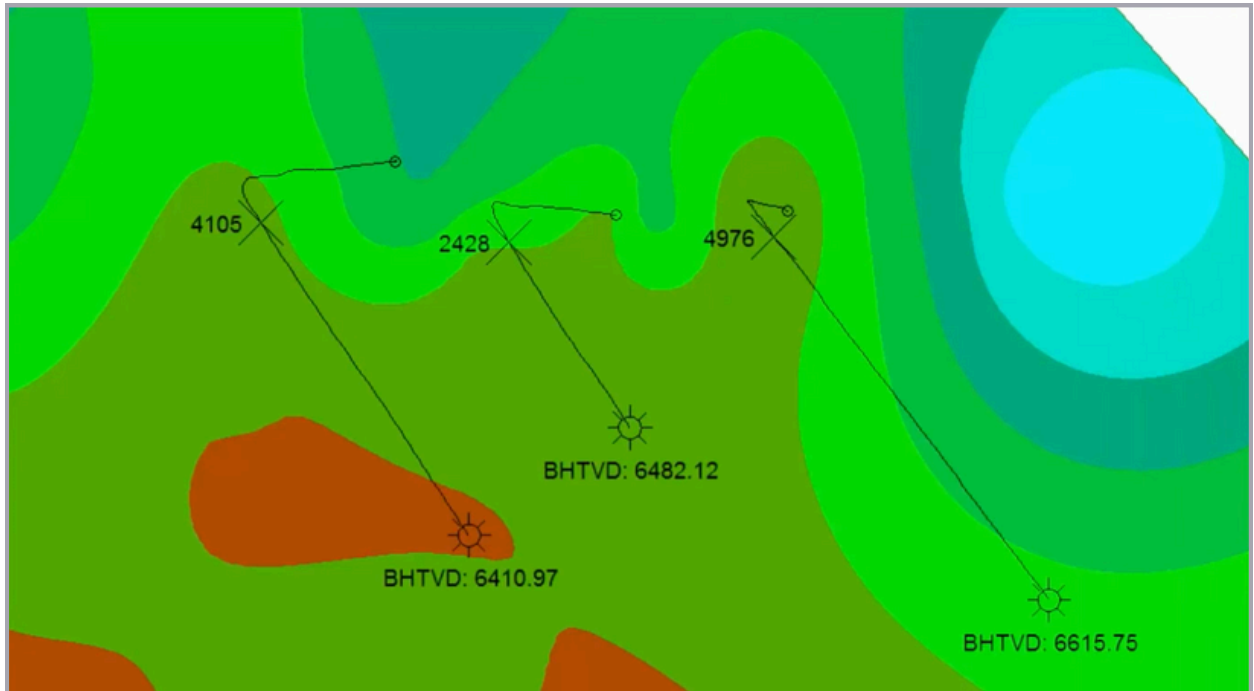
Streamline Exploration and Production Workflows

Our comprehensive **GVERSE GeoGraphix** solution integrates geological, geophysical, petrophysical, and data management tools allowing geoscience teams to collaborate and make rapid, accurate decisions.

GeoAtlas is upgraded to the latest **ArcGIS Maps SDK**, replacing the **ArcGIS Runtime Engine**. Stream from map and feature services like **WMS**, **WMTS**, **ArcGIS Enterprise** and **ArcGIS Online**. Configure advanced rendering and transparency options. Match display settings for imported layers.

Advanced Geological Mapping for Informed Insights

Faster, Presentation-Quality Geologic Maps



Key Benefits

Presentation-Quality Geologic Maps

GeoAtlas enables geoscientists to create and print extremely high-quality, geologic maps using a wide variety of standard geological and custom-created symbols.

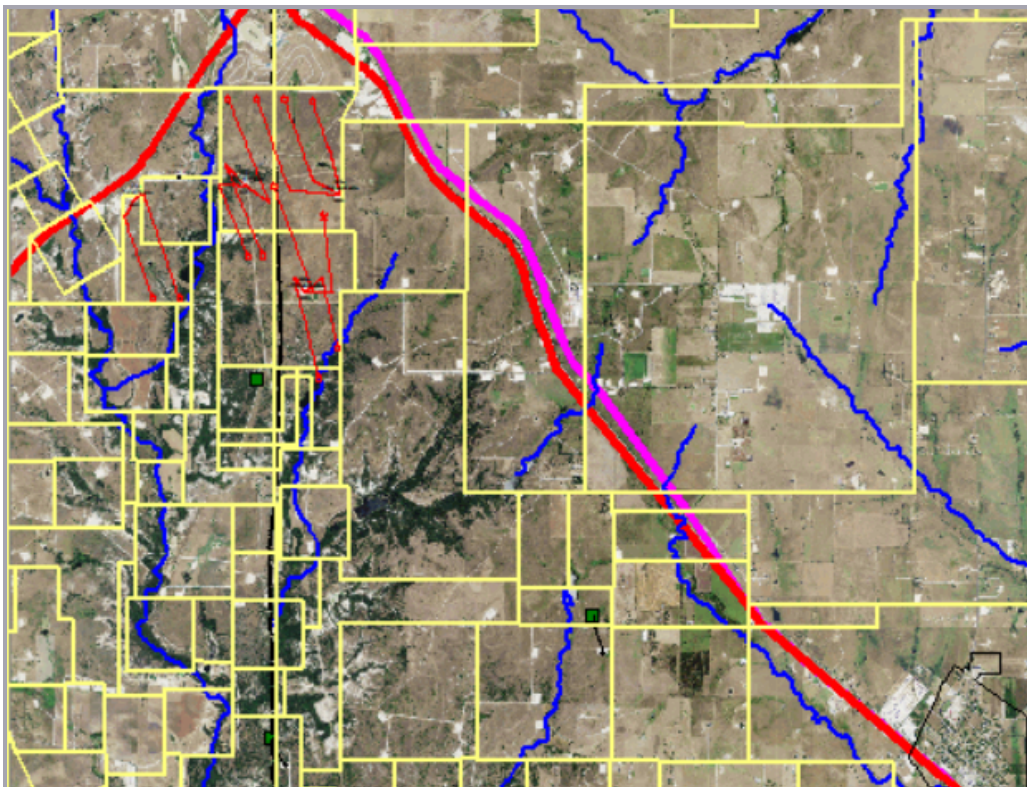
Esri Integration

GeoAtlas is upgraded to the latest ArcGIS Maps SDK, replacing the ArcGIS Runtime Engine. Stream from map and feature services like WMS, WMTS, ArcGIS Enterprise and ArcGIS Online. Configure advanced rendering & transparency options. Match display settings for imported layers.

Key Features

Base Mapping

- Display well spots, land grids, satellite imagery and any one of eight, different layer types to create high-quality base maps.
- Modify map attributes and add drawings, objects, and annotations.
- Subset map and prospect areas using Areas of Interest (AOIs).
- Thematically map on any attribute posted on the base map.
- Spot well locations from footage calls individually, and in-batch.
- Use Layer Display Attributes to gain complete control over all display properties.
- Construct montages displaying maps and cross sections, as well as inserted text and graphics files defined in other applications.
- Generate production bubble and pie maps.
- Mine project data graphically using conditional pie mapping on almost any field in the project database.
- Import shapefiles.
- Create custom coordinate systems as a result of **GeoAtlas**' support of practically every datum and map coordinate system worldwide (using Blue Marble Geographics geodetic libraries).
- Print presentation maps to any size and scale.

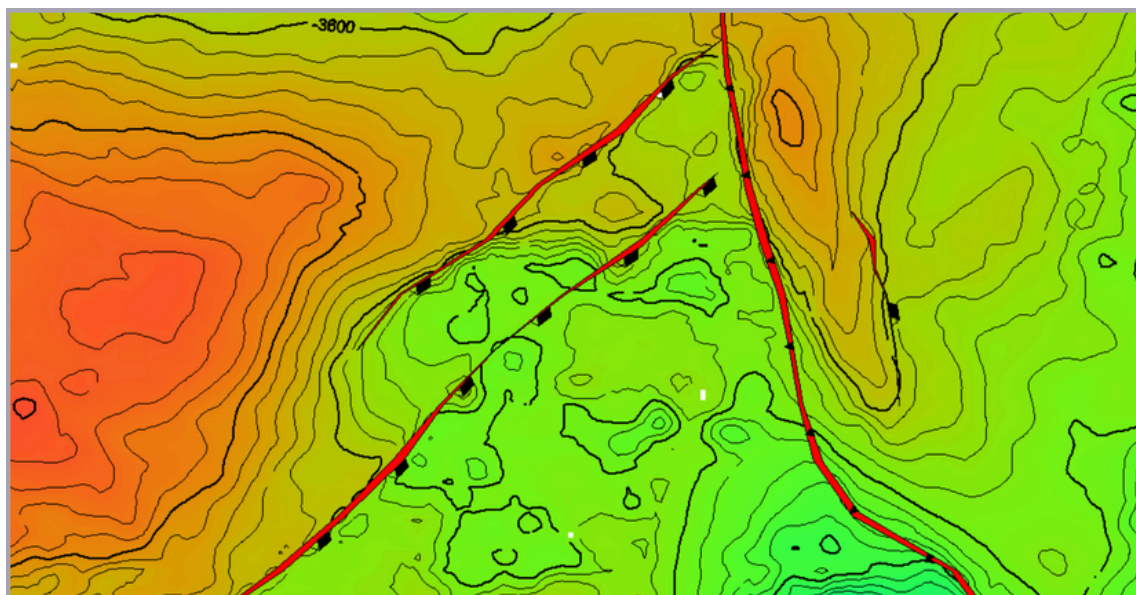


Contour Mapping

- Create subsurface map layers using one of ten different gridding algorithms.
- Edit contours.
- Honor faults when creating subsurface contour maps.
- Create Isopach and Isochore maps.
- Perform grid-to-grid operations and contour-to-grid operations.
- Create subsurface contour maps from well data, zone attributes, ZMAP+, ASCII XYZ, Digital Elevation Models (DEMs) and existing shapefile layers.

Volumetrics

- Calculate volume and Area Statistics from contour maps.



Source Grid :
K4b Horizon, Time Structure Map

Grid Type :
Thickness Map

Polygons Available for Calculations

	Polygon Entities	Include	Name for Report	Area	Volume
1	Fault Polygon	<input checked="" type="checkbox"/>	Fault Polygon	17.00	132139459.45
2	Contour	<input checked="" type="checkbox"/>	-3740 Contour	1.93	15872989.78
3	Contour	<input checked="" type="checkbox"/>	-3740 Contour	0.46	3768302.49
4	Contour	<input checked="" type="checkbox"/>	-3720 Contour	6.54	53514522.53
5	Contour	<input checked="" type="checkbox"/>	-3700 Contour	0.99	8012625.03
6	Contour	<input checked="" type="checkbox"/>	-3700 Contour	23.87	193850917.70
7	Contour	<input checked="" type="checkbox"/>	-3700 Contour	0.03	225940.42

Calculation Options
☒ Use Splined Entities for Calculations
☐ Estimate with higher accuracy

Statistics

Total Area : 57.65
Acres

Total Volume : 462151688.07
Barrels

Format Options

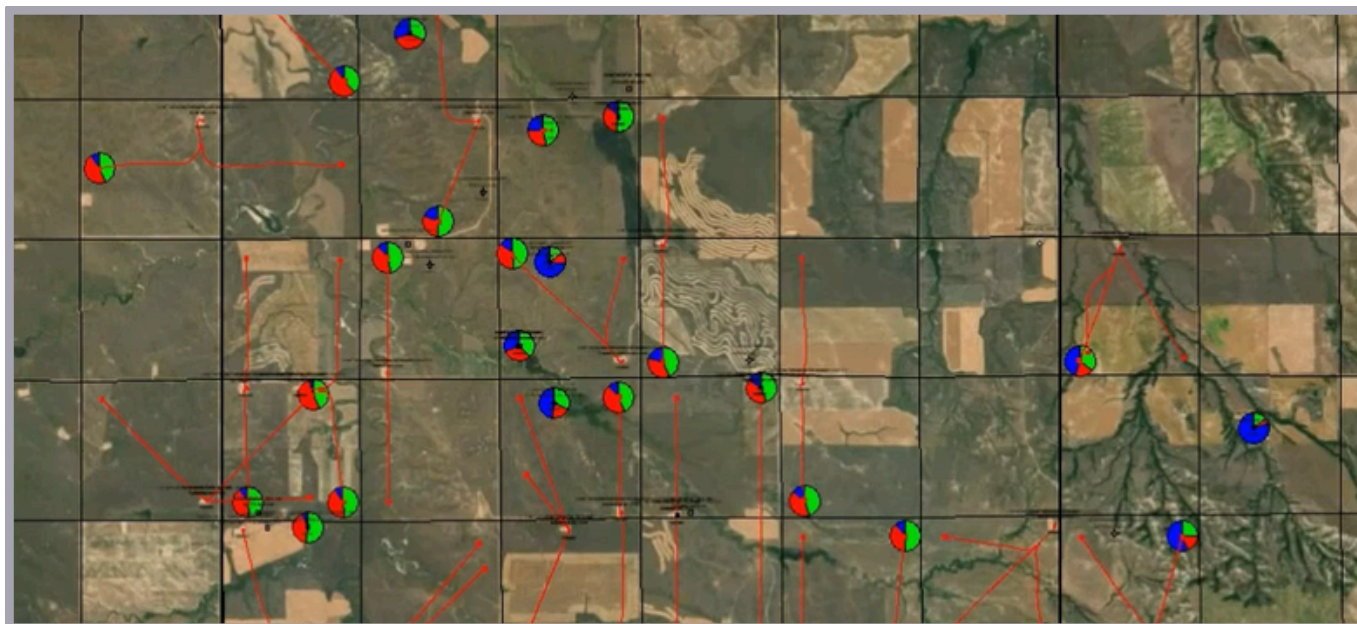
2
Number of decimal places

☐ Use Scientific Notation

Column Options

ArcGIS

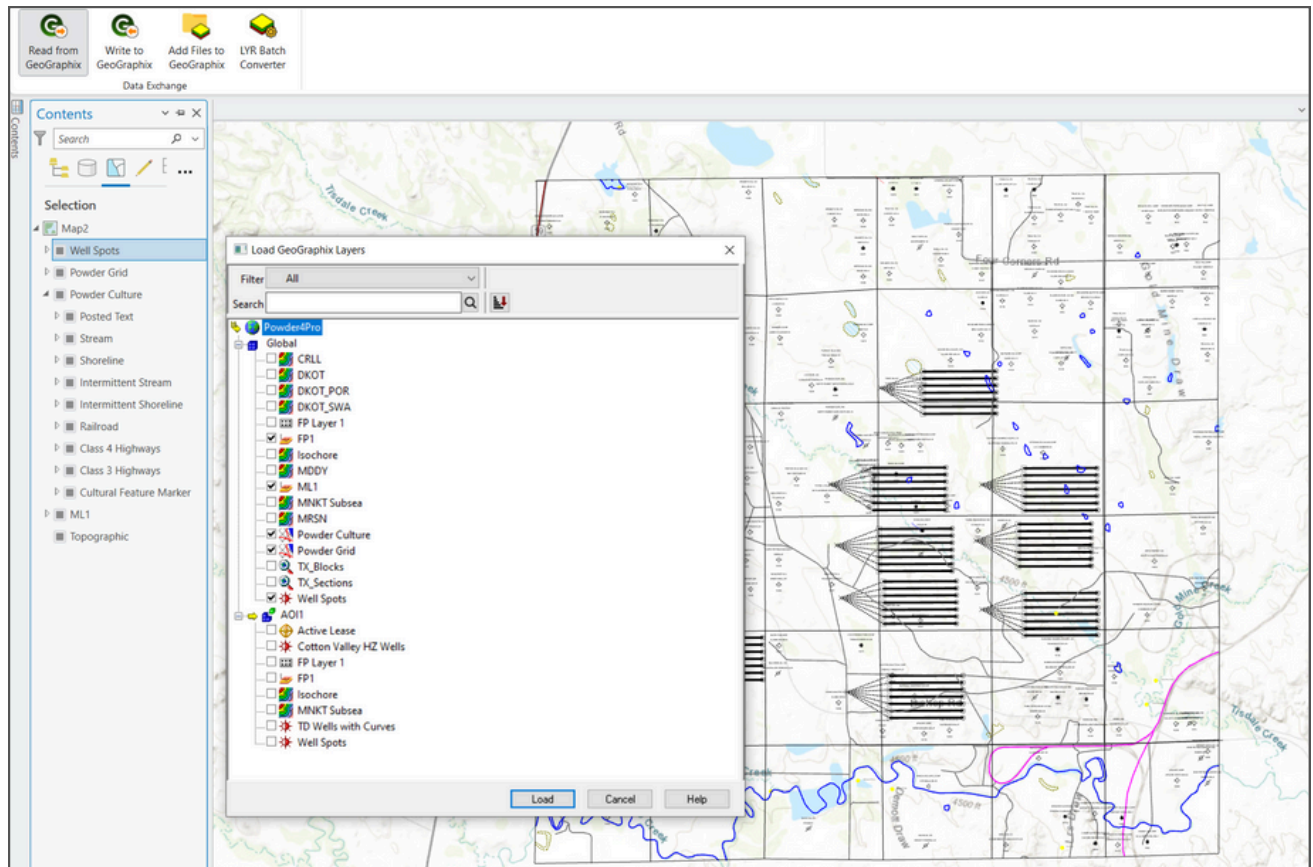
- Stream Web Map Service (WMS) layers onto **GeoAtlas** maps.
- Import layer (.lyr) files.
- Stream **ArcGIS** map service onto **GeoAtlas** maps.
- Display layers from SDE (Spatial Data Engine)
- Publish **GeoAtlas** map layers to **ArcGIS** Online.



Release Highlights

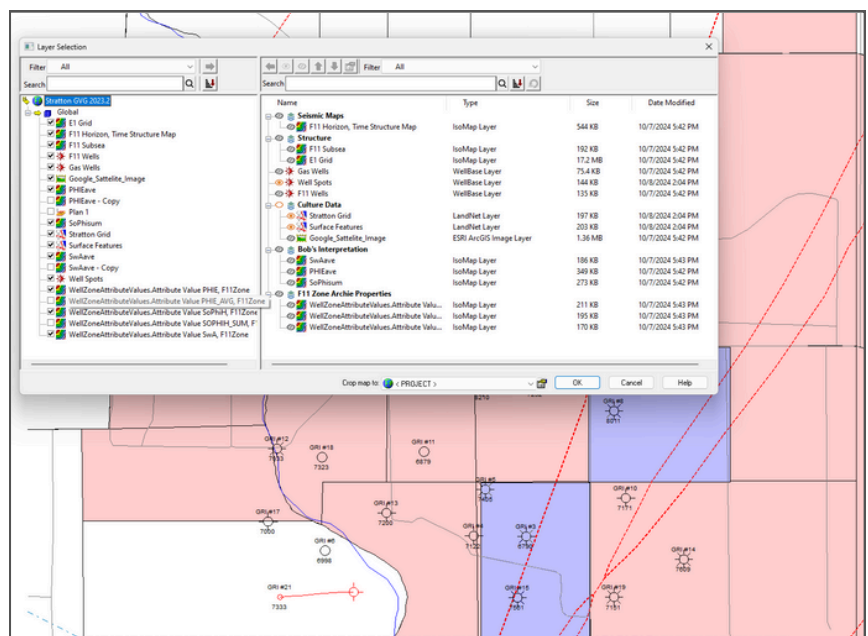
Connect GeoGraphix & ArcGIS Pro

Easily exchange layers between your **VERSE GeoGraphix** & **Esri ArcGIS Pro** projects with the new **GeoGraphix Add-In for ArcGIS Pro**.



Search, Restore, and Organize Layers and Maps

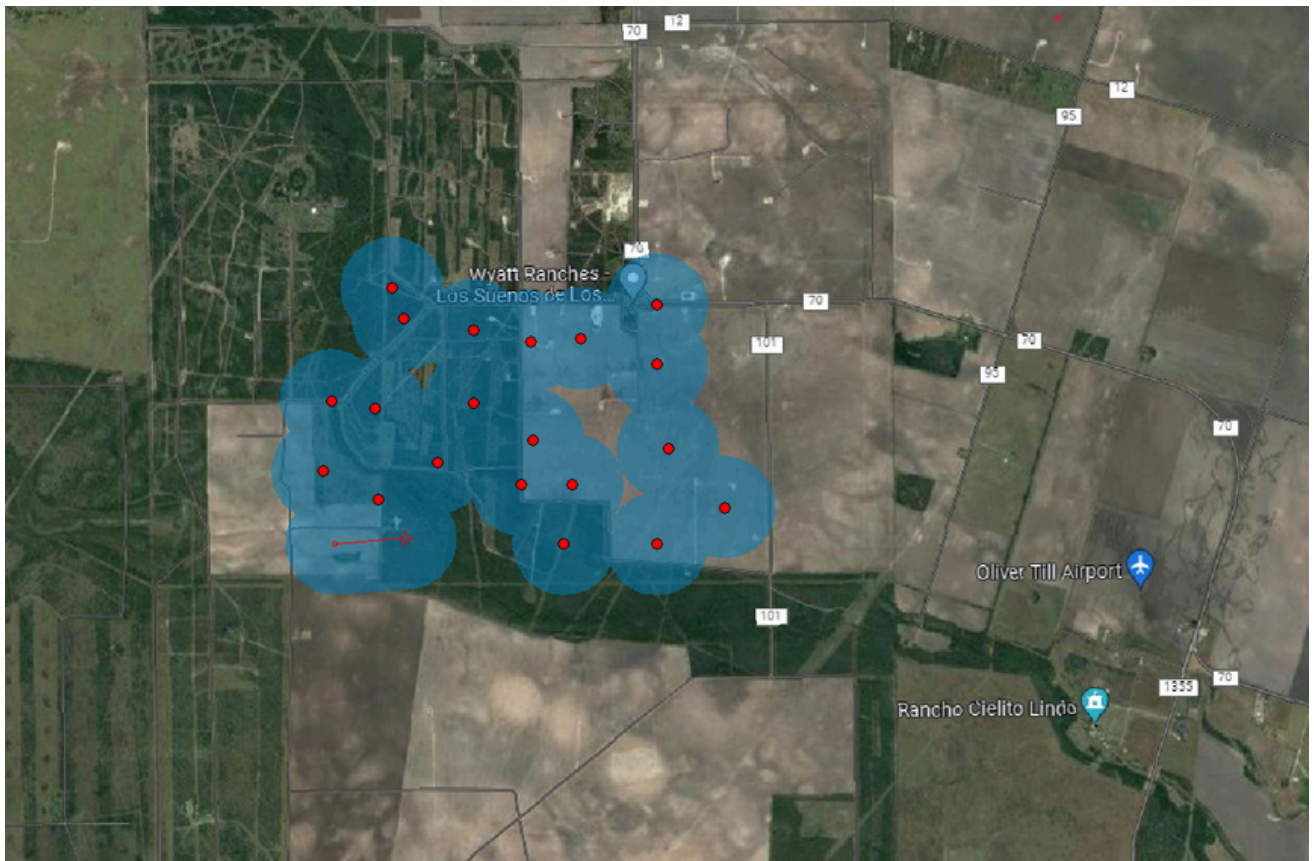
Quickly find layers with a new search function in the Layer Select dialog. Use previous and next view options to restore your map. Expanded support for layer stacks in Layer Select and Display Attributes dialogs.



Release Highlights

Easier Visualization of Distances & Locations

Add a buffer around wells and wellbores as a new entity of the well layer. Estimate distances more accurately with the new cursor spotlight tool. Control size and appearance of well highlights. Easily switch CRS of the cursor readout with a new hot key.



Triton 2024 Features List

Release	Details
2024.2	<ul style="list-style-type: none"> • Easily exchange layers between your GVERSE GeoGraphix & Esri ArcGIS Pro projects with the new GeoGraphix Add-In for ArcGIS Pro: • Transfer layers from any AOI in a GeoGraphix to ArcGIS Pro. • Transfer layers from ArcGIS Pro to any AOI in a GeoGraphix. • Import lyr, lyrx, cad, and other formats to your GeoGraphix project using ArcGIS Pro. • Automatically match display properties for transferred layers, including: <ul style="list-style-type: none"> • IsoMap layers • WellBase layers • Field Planning layers, including multilateral, hazard, and lease layers • LandNet layers • LeaseMap layers • Generic GeoAtlas layers • XSection layers • AOI layers. • Convert older unsupported layers by AOI and automatically update your saved maps. • Upgrade to the latest Esri technology with the ArcGIS Maps SDK replacing ArcObjects. • Stream maps into GeoAtlas from public or private maps & feature services: <ul style="list-style-type: none"> • Web Map Servers • Web Map Tile Services • ArcGIS Map Servers • ArcGIS Feature Servers • ArcGIS Online Portals • Configure advanced rendering and transparency options for all applicable layers. • Match rendering properties for layers imported from an ArcGIS Online portal. • Print or plot all layers imported with the ArcGIS Maps SDK on your GeoAtlas maps. • Georeference images directly on the GeoAtlas map. • Easily select wells within specified polygons on any available layer.
2024.1	<ul style="list-style-type: none"> • Expanded support for Layer Stacks to Layer Select and Layer Display Attributes dialogs. • Quickly find layers to add to maps with searching capability in the Layer Select dialog. • Draw distance buffer around and along wells on well layers. • Restore the previous view of the map with undo and redo options for layer visibility, adding, removing, stacking, and changing the active layer. • Determine distances between objects on the map with the cursor spotlight tool. • Control the color and size of well highlights on the map. • Cycle between the database, project and a custom CRS for the cursor location display with a new hot key. • Add partial transparency to IsoMap color fill in the Color Density display. • Search for stacks in the layer display panel of GeoAtlas. • Moved the WinTab32 digitizer options to the Tools menu. • Faster creation and updates for IsoMap layers created from zone attributes. (2023.2.1)

Technical Specifications

The following sections list the system requirements for the **GeoAtlas**:

Hardware

Minimum

- 2.4GHz 64-bit Intel class or better
- 4 GB RAM
- 1,024 x 768 graphics resolution
- 19-inch monitor

Recommended

- Quad 2.4 GHz 64-bit Intel class or better
- 16 GB RAM or greater
- NVIDIA GeForce or Quadro – 2GB VRAM
- Dual 21+ inch monitors

Software

- Microsoft® .NET 4.5
- Microsoft DirectX 11

Note: *It is recommended to use the latest Microsoft® service packs and security patches.*

Operating System(s)

- Windows® 10 Professional x64
- Windows® 10 Enterprise x64
- Windows® 11 Professional x64
- Windows® 11 Enterprise x64

Licenses

The following licenses are required to run the application:

- GVERSE GeoGraphix license version 2024.2
- GeoAtlas license version 2024.2
- License Management Tool 2024.1